

## Financial Support for the Doctoral Students at the Degree Programs in Systems and Information Engineering

Degree Programs in Systems and Information Engineering (SIE) offer the doctoral students a financial support which the university and SIE provide them half the amount equivalent to the annual Student Fees (Entrance Fee and Tuition Fee).

Financial support system	Organization in charge
<input type="checkbox"/> Student Fees (Entrance Fee and Tuition Fee ) Exemption	◇ University of Tsukuba
<input type="checkbox"/> Research Assistant(RA) System (Providing RA honorarium for research activities)	◇ Degree Programs in Systems and Information Engineering (SIE)

**(1) This financial support is offered by combining Student Fees (Entrance Fee and Tuition Fee) Exemption System and Research Assistant (RA) System.**

In this financial support system, in addition to the exemption of student fees offered university-wide, SIE uniquely employs students as research assistants (RA) and provides them RA honorarium for engagement of research work. By a combination of the two systems, the university and SIE provide a student entrance fee and the half of annual tuition fee at the first grade, and the half of annual tuition fee at the second and third grade.

**(2) The following students are not applicable for this financial support.**

- Working students who have a constant income, such as students who receive a salary from their place of employment
- Japanese government scholarship students and Research Fellowships for Young Scientists of the Japan Society for the Promotion of Science (JSPS Fellowships) who receive a constant income
- International students of foreign governments who receive an allowance equivalent to the tuition or cost of living

**(3) Students who receive loan-based scholarships of Japan Student Services Organization (JASSO) or other organizations are eligible to apply.**

**(4) Duration of the support is for three years (standard course term).**

Please note that you are required to apply for this financial support every year. Furthermore, you are required to submit a work report at the end of every month, however, it is regarded that you did not complete research work of the month and the RA honorarium are not paid if you don't submit it. In addition to that, if you do not work well, you may be not allowed to continue to work as a RA.

(5) In order to receive this financial support, it is necessary for you to submit the application documents required for the exemption of Student Fees offered university-wide, and the application documents to receive this financial support by the designated date.

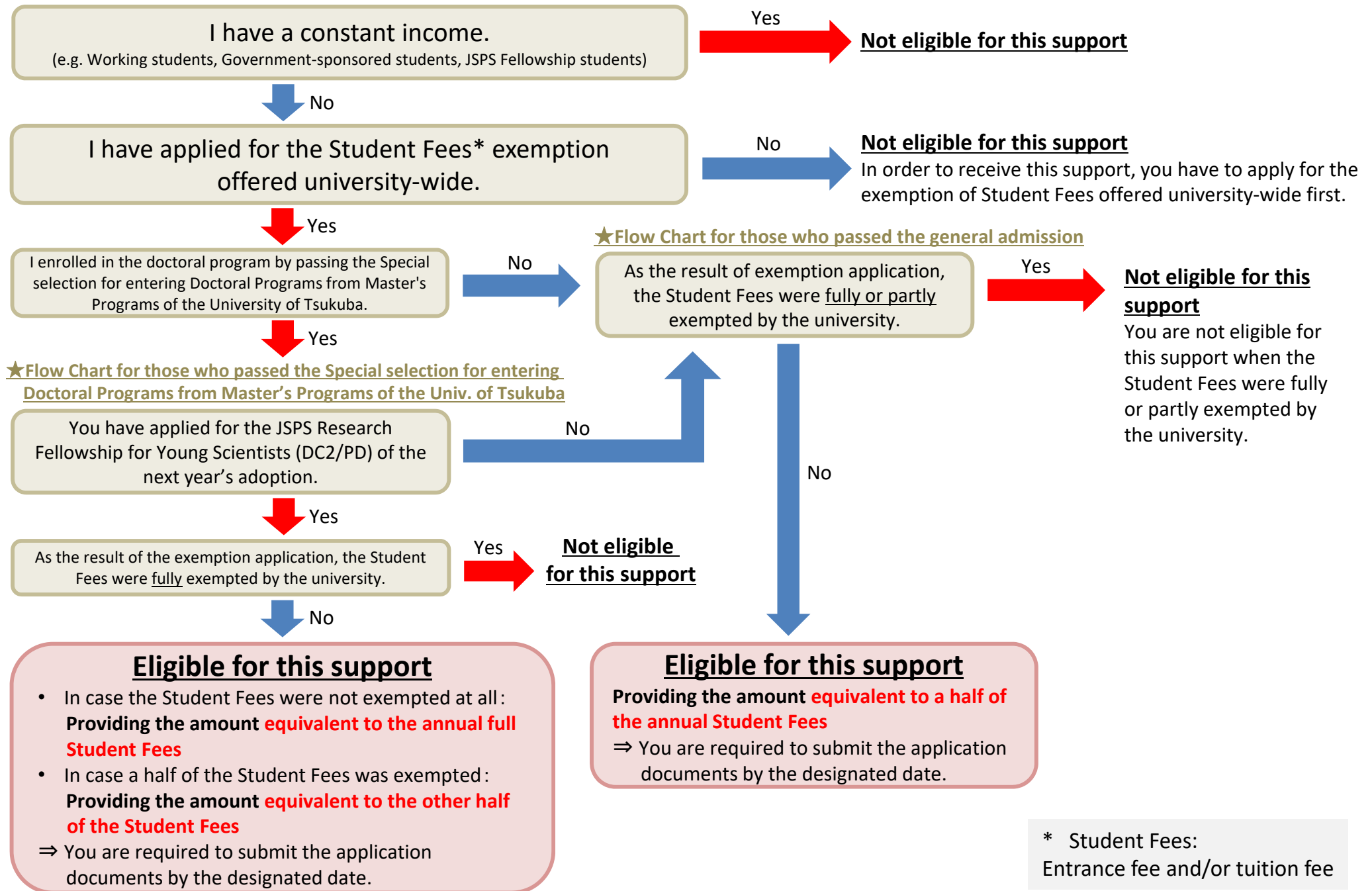
You are not eligible to receive a support if you fail to complete the designated procedures.

**[Reference]**

Financial Support for the Doctoral Students at SIE: Eligibility Flow Chart

April, 2021  
Degree Programs in Systems and Information Engineering,  
Graduate School of Science and Technology,  
University of Tsukuba

# Financial Support for the Doctoral Students at SIE: Eligibility Flow Chart



\* Student Fees:  
Entrance fee and/or tuition fee